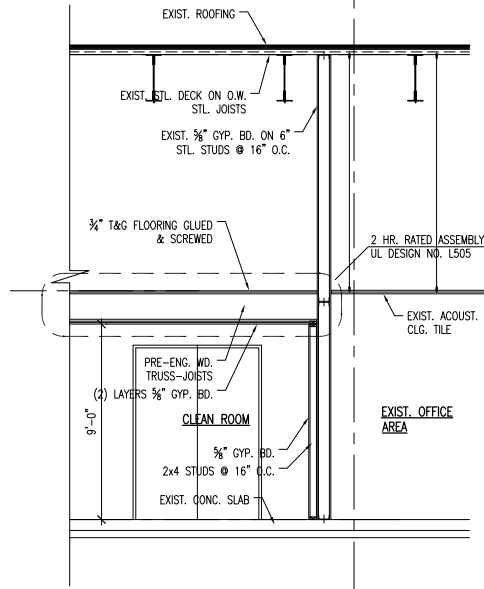
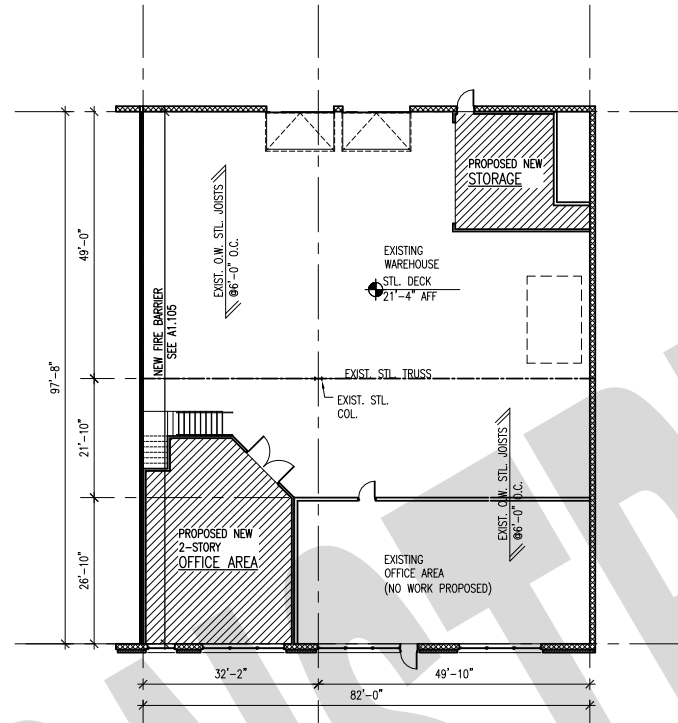


A1.106 BUILDING SECTION
SCALE: 1/4"=1'-0"



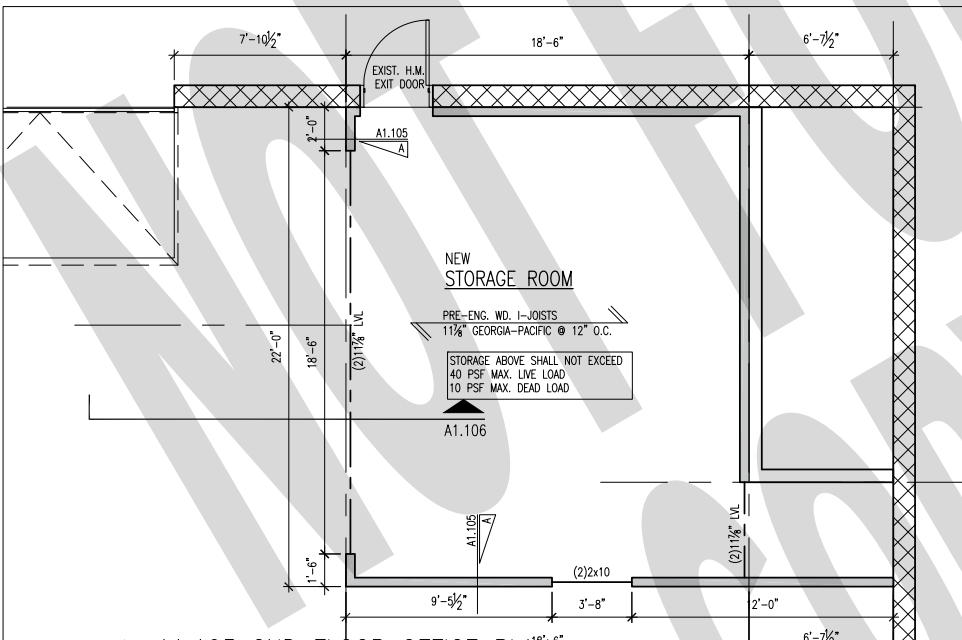
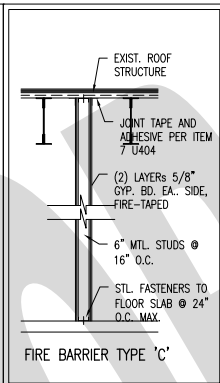
A1.104 BUILDING SECTION
SCALE: 1/4"=1'-0"



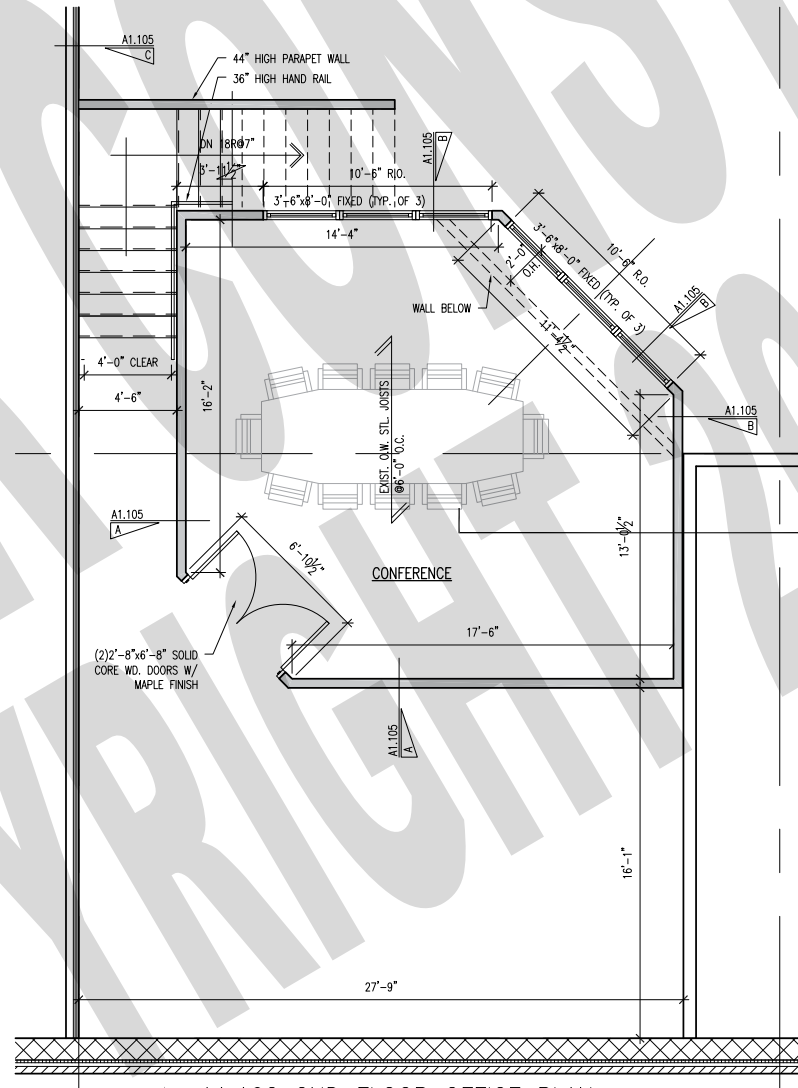
A1.103 KEY PLAN
SCALE: 1/16"=1'-0"

PROJECT INFORMATION	
OWNER	
* CODE	MICHIGAN BUILDING CODE 2003 ICC/ANSI A117.1.1 2003 & MICHIGAN BARRIER FREE DESIGN LAW OF PUBLIC ACT 1 AS AMENDED.
USE GROUP	(F-2) FACTORY INDUSTRIAL LOW-HAZARD/ (B) BUSINESS (303.1)
CONSTRUCTION TYPE	III-B (TBL. 601)
FIRE SUPPRESSION	EXISTING (903.2.10)
OCCUPANCY	EXISTING OFFICE SPACE 1570 SF/100 = 15 (TBL. 1004.1.2) EXISTING INDUSTRIAL 5410 SF/100 = 54 NEW OFFICE SPACE 1350SF/100 = 13 NEW STORAGE SPACE 405SF/300 = 1 MAX. ALLOWED OCC. 83 PEOPLE
EGRESS	WIDTH/ OCCUPANCY: (TBL. 1005.1) TOTAL OF WIDTHS = 72'/.15 = 480 LENGTH OF TRAVEL: (TBL. 1015.1) USE GROUP F-2/ NON-SPRINKLED = 300 FT. MAX. USE GROUP B/ NON-SPRINKLED = 200 FT. MAX. NUMBER OF EXITS: (TBL. 1018.1) 2 EXITS MIN. REQUIRED 2 EXITS PROVIDED
<p>* ALL ENGINEERS, CONTRACTORS AND SUPPLIERS INVOLVED WITH THIS PROJECT SHALL COMPLY WITH ALL CODES LISTED BELOW, ISSUED AND APPROVED CODE MODIFICATIONS AND/OR LOCAL BUILDING OFFICIAL APPEALS AND RULINGS AND WHENEVER REQUIRED SHALL PROVIDE SHOP DRAWINGS AND SUBMITTALS CLEARLY DESCRIBING COMPLIANCE TO THE OWNER FOR REVIEW AND APPROVAL.</p> <ul style="list-style-type: none"> - MICHIGAN BUILDING CODE 2003 - ICC/ANSI A117.1.1 2003 & MICHIGAN BARRIER FREE DESIGN LAW OF PUBLIC ACT 1 AS AMENDED. - MICHIGAN UNIFORM ENERGY CODE RULES PART 10, WITH ANSI/ASHRAE/IESNA STANDARD 90.1-1999 - MICHIGAN PLUMBING CODE 2003 - MICHIGAN MECHANICAL CODE 2003 - INTERNATIONAL FIRE CODE 2003 - INTERNATIONAL FUEL GAS CODE 2003 - MICHIGAN ELECTRICAL CODE BASED ON 2002 NEC WITH PART 8 STATE AMENDMENTS. 	

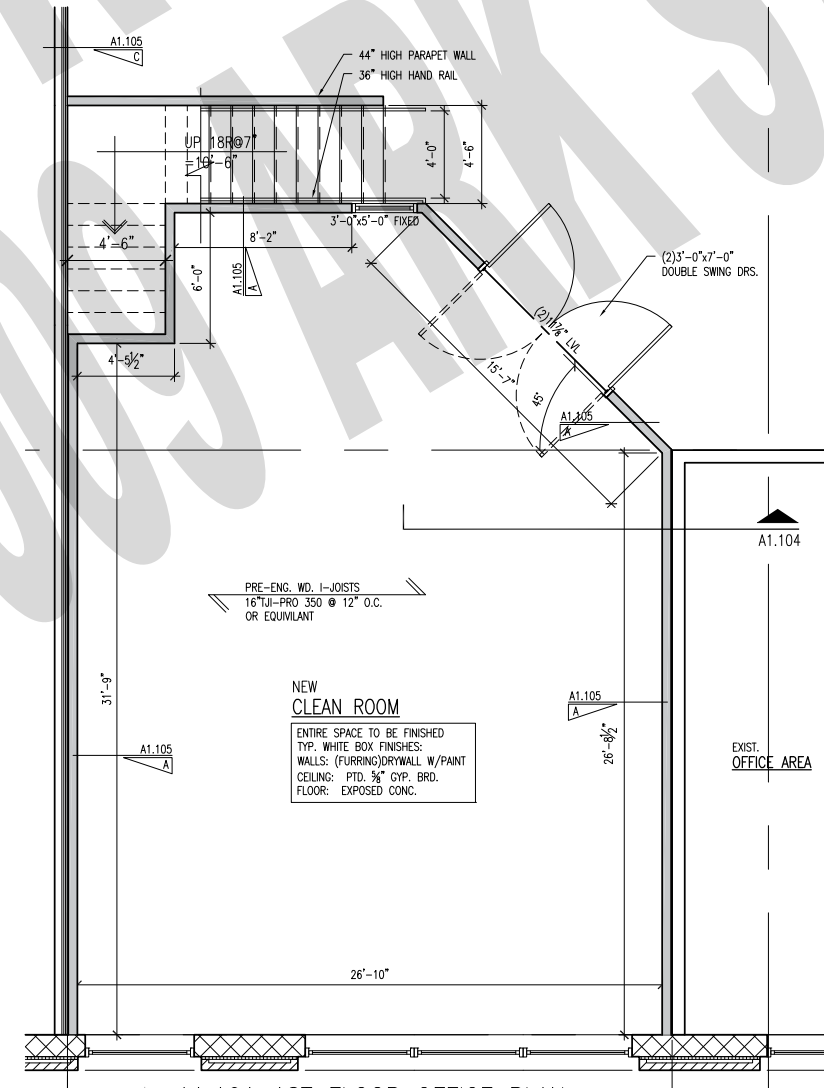
A1.105 WALL TYPES			
SYMBOL	CONSTRUCTION	LOCATION	
A	2x4 WOOD STUDS AT 16" O.C. (1) LAYER 3/4" GWB EACH SIDE	ALL INTERIOR WALLS NOT LISTED BELOW	
B	UL DESIGN NO. U-322: 2x4 WOOD STUDS AT 16" O.C. (2) LAYERS 3/4" GWB EACH SIDE EXTENDED TO UND. SIDE OF DECKING	PERIMETER OF 2ND FLOOR OFFICE AREA MIN. 2 HOUR FIRE RATED	
C	UL DESIGN NO. U-404: 6" 18GA. METAL STUDS AT 16" O.C. (2) LAYER 3/4" GWB EACH SIDE EXTENDED TO UND. SIDE OF DECK FIRE TAPE AS REQUIRED	NEW FIRE BARRIER AT EXISTING DEMISING WALL LOCATION MIN. 2 HOUR FIRE RATED	



A1.103 2ND FLOOR OFFICE PLAN
SCALE: 1/4"=1'-0"



A1.102 2ND FLOOR OFFICE PLAN
SCALE: 1/4"=1'-0"



A1.101 1ST FLOOR OFFICE PLAN
SCALE: 1/4"=1'-0"





